

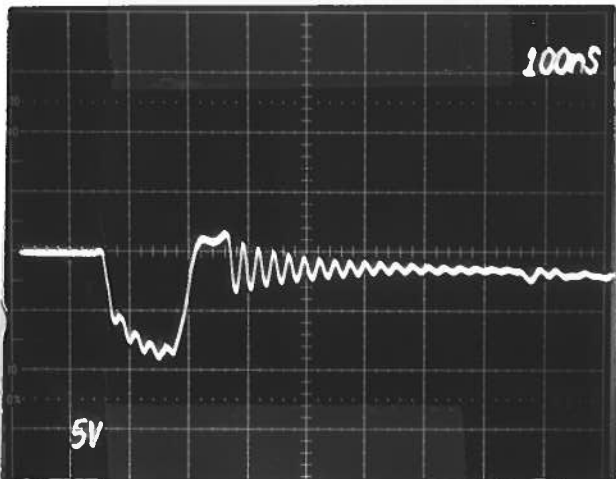
PULSE GENERATOR

PERFORMANCE CHECK

Model: AV0-7A-N-CR02

S.N.: 6776

Date: OCT 28 93



a) Output signal amplitude:

0 to -300 AMP

b) Pulse width:

100 - 200 ns

c) Rise time:

< 100 ns

d) Fall time:

< 30 ns

e) PRF:

0 to 62 KHz
10% max duty

f) Jitter, stability: OK

g) Prime power:

a) +24 VDC, 100mA

b) 0 to -24 VDC,
20 Amp.

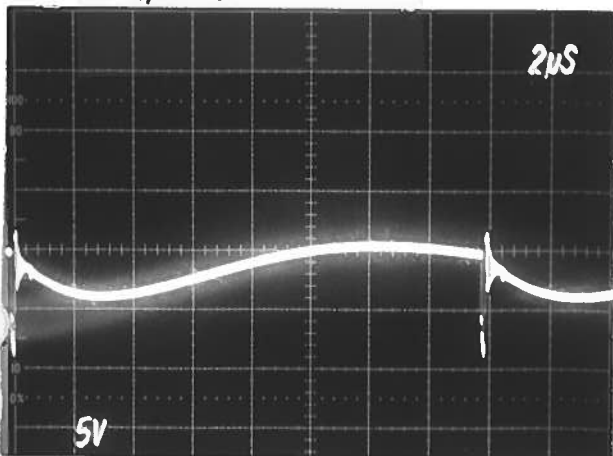
ASB

① $R_L = \frac{0.1}{4}$ (CRADDOCK TO 220 20 WATT)
 $= 25 \text{ m}\Omega$

$7.5 \text{ V} = 300 \text{ AMP}$

PRF = 60 KHz

$V_{HV} = -24 \text{ VDC}$



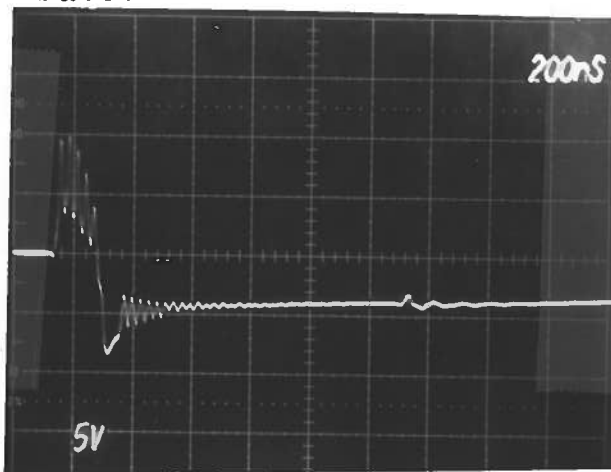
② AS @ DAT 2us/DIV
DUE TO SCOPE
LIMITATIONS.

PULSE GENERATOR
PERFORMANCE CHECK

Model:

S.N.: 6776 conf

Date:



a) Output signal amplitude:

b) Pulse width:

c) Rise time:

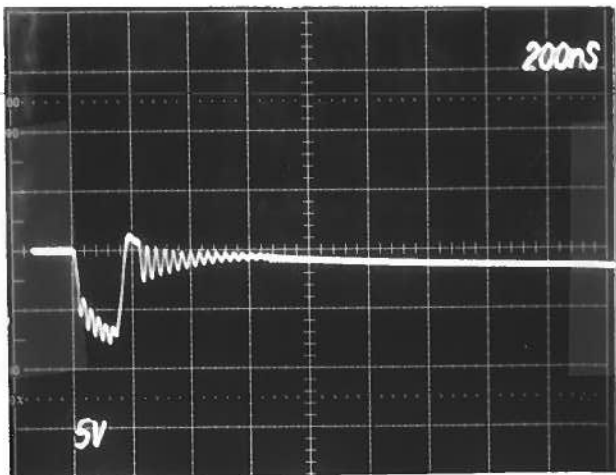
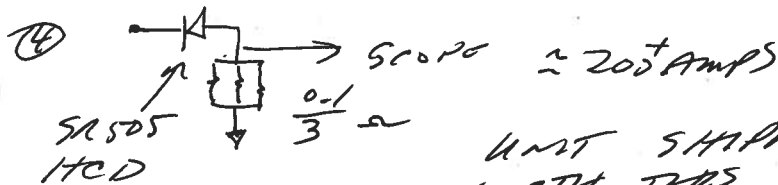
d) Fall time:

e) PRF:

f) Jitter, stability:

g) Prime power:

③ CLED LOAD CONNECTED
L much much too high.

UNIT SHIPPED
WITH TEST
LOAD ATTACHED