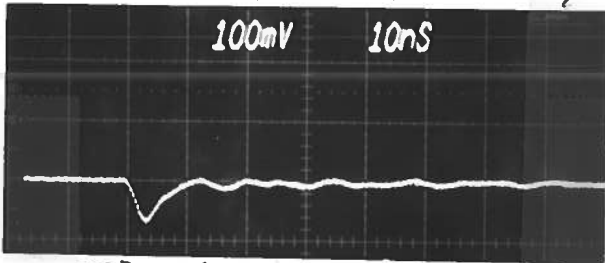


PULSE GENERATOR
PERFORMANCE CHECK

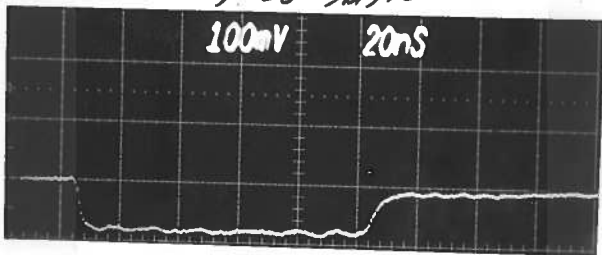
Model: *AVL-ITT3-OT-M*

S.N.: *5189*

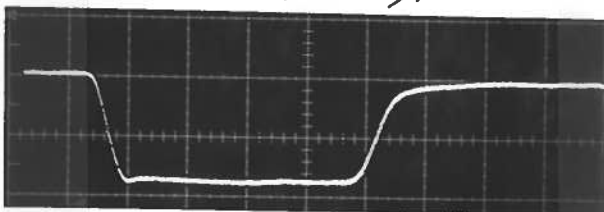
Date: *OCT 16 1989*



(A) *ITT3-M OUT ≈ 440V/DIV
PW MAIN*



(B) *AS (A) BUT PW MAX
≈ 440V/DIV*



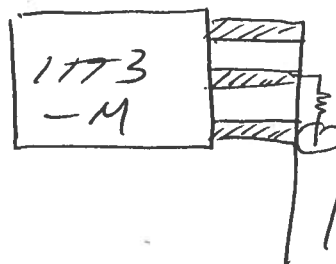
(C) *MAINFRAME OUT TO 50Ω
≈ 100 VOLTS/DIV*



(D) *MAIN OUT FOR C ABOVE*

- a) Output signal amplitude:
-300 VOLTS TO
 - b) Pulse width: *HIGH Z (> 10K)*
5 TO 100 NSEC
 - c) Rise time:
≤ 3 NSEC
 - d) Fall time:
≤ 3 NSEC
 - e) PRF:
0 TO 1KHz
 - f) Jitter, stability:
OK
 - g) Prime power:
120/240 V, 50-60 Hz
- h) *tr: ≤ 20 NSEC*

*A, B TEST
AT CALIBRATION*



*40 db
TO 50Ω
SEALER*

*NOTE: THESE REFLECTIONS
DO NOT AFFECT
AT OUTPUT*