

PULSE GENERATOR

PERFORMANCE CHECK

Model: *AVR-B2-PS-W-TR-LA-PN*

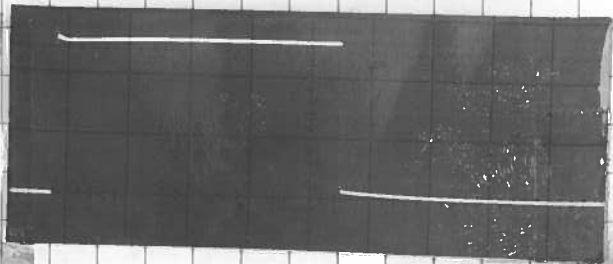
S.N.: *1284*

Date: *MAY 12 83.*

*TEST WAVEFORM
PLOTS SEE
OVER.*

- a) Output signal amplitude:
P: 0 TO +50 V
N: 0 TO -50 V
- b) Pulse width:
P: 0.1 TO 10 USEC
N: 0.1 TO 10 USEC
- c) Rise time:
P: < 0.5 NSEC
N: < 0.5 NSEC
- d) Fall time:
P ≈ 5 NSEC
N ≈ 5 NSEC
- e) PRF:
0 TO 20 KHz.
- f) Jitter, stability:
OK
- g) Prime power:
110/220 V
50 - 60 Hz.

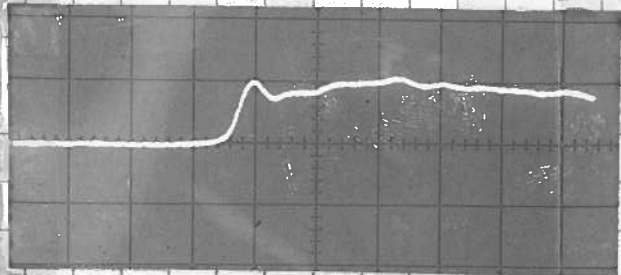
[Signature]



①

P OUT

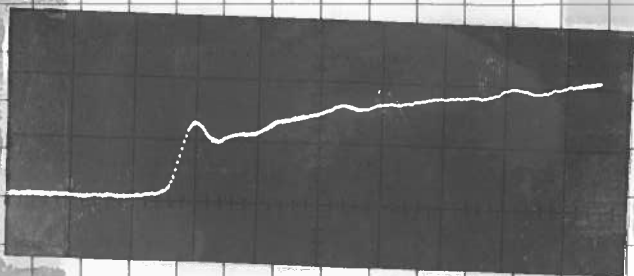
20 VOLTS/DIV
1.0 USEC/DIV
4.0 KHZ



②

P OUT

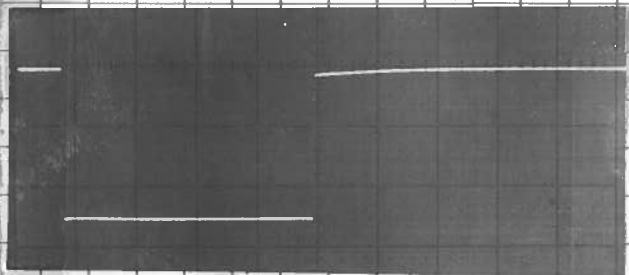
≈ 25 VOLTS/DIV
1.0 USEC/DIV
4.0 KHZ



③

P OUT

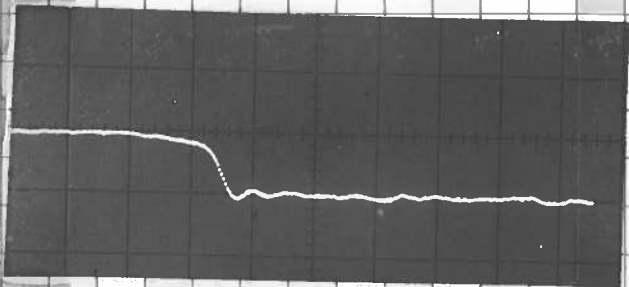
AS ② BUT
MAX VOLT.



④

N OUT

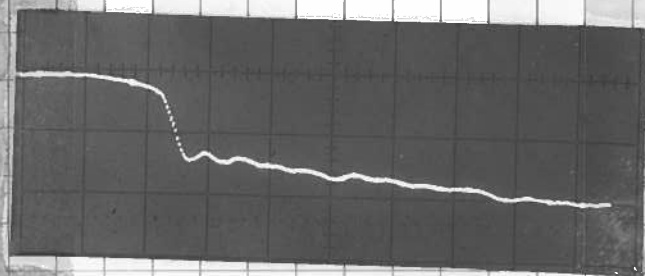
20 VOLTS/DIV
1.0 USEC/DIV
4.0 KHZ



⑤

N OUT

≈ 25 VOLTS/DIV
1.0 USEC/DIV
4.0 KHZ



⑥

N OUT

AS ⑤ BUT
MAX VOLT.