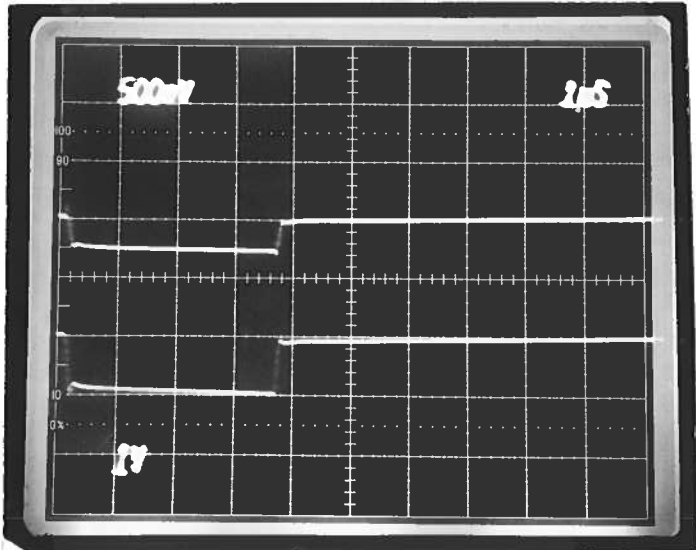


PULSE GENERATOR
PERFORMANCE CHECK

Model: *AV-155C-N*
 S.N.: *7922*
 Date: *MAR 4 1997*

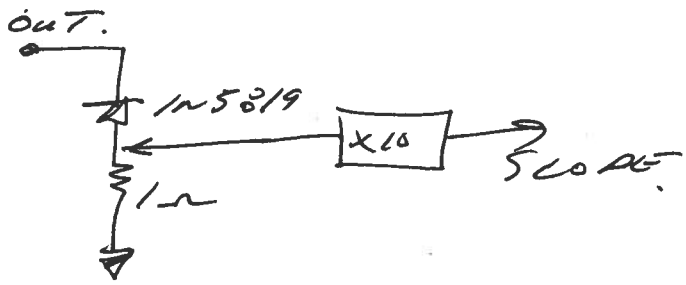


- a) Output signal amplitude:
PULSE: 0 TO -2.0 AMP
- b) Pulse width:
100 NS TO DC.
- c) Rise time:
≤ 50 NS
- d) Fall time:
≤ 50 NS
- e) PRF: *0 TO 1.0 MHz*
- f) Jitter, stability:
OK
- g) Prime power:

TOP MONITOR OUT TO
10K. (1 VOLT/DIV)

BOT LOAD RESISTOR
VOLTAGE (1V/DIV)

± 15 VOLTS
+ 300 mA
- 300 TO - 2800 mA
(DUTY CYCLE,
AMPLITUDE
DEPENDENT).



[Signature]