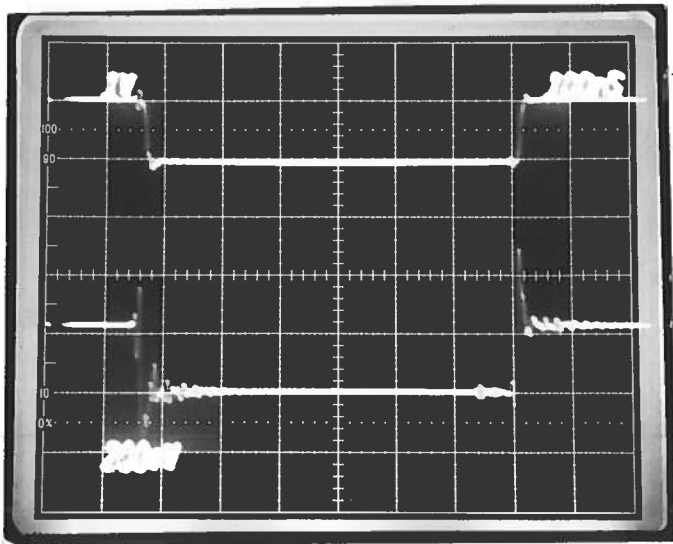


PULSE GENERATOR  
PERFORMANCE CHECK

Model: *AV-155A-N*  
S.N.: *7921*  
Date: *MAR 5 1997*



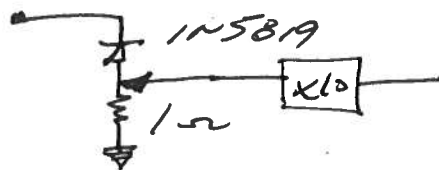
- a) Output signal amplitude:  
*PULSE: 0 TO 200 mA*  
*DC: 0 TO 200 mA*
- b) Pulse width:  
*20 NS TO DC*
- c) Rise time:  
*≤ 10 NS*
- d) Fall time:  
*≤ 10 NS*
- e) PRF: *0 TO 10 MHz*
- f) Jitter, stability:  
*OK*
- g) Prime power:  
*+15 VOLTS, 200 mA*

TOP MONITOR OUT TO 50Ω *1 VOLT/DIV*

*-15 VOLTS, 200 mA TO*

BOT LOAD RESISTOR VOLTAGE  
*200 mV/DIV*  
*100 NS/DIV*

*600 mA (DEPENDS ON AMPLITUDE + DUTY CYCLE.*



*[Signature]*