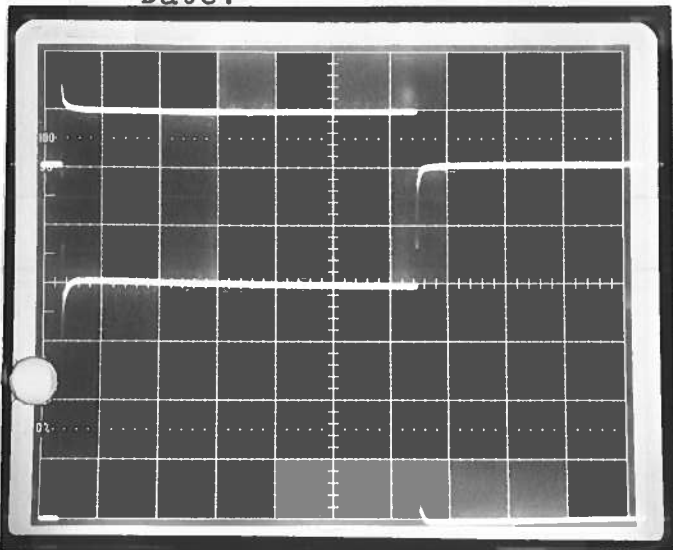


PULSE GENERATOR  
PERFORMANCE CHECK

Model: *AVO-3C-C-PN-M-0P2*

S.N.: *7690*

Date: *SEPT 31 1966*

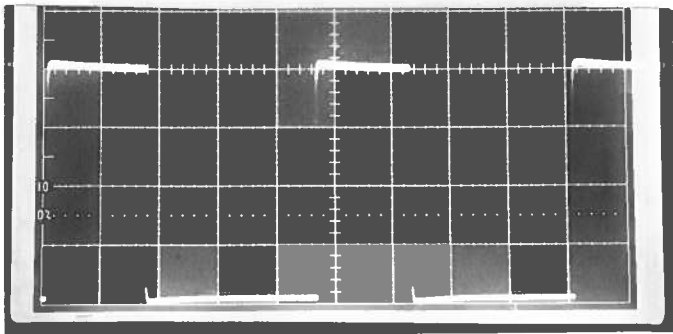


MONITOR OUT  
1V/DIV  
← 0V

LOAD VOLTAGE  
10V/DIV  
← 0V

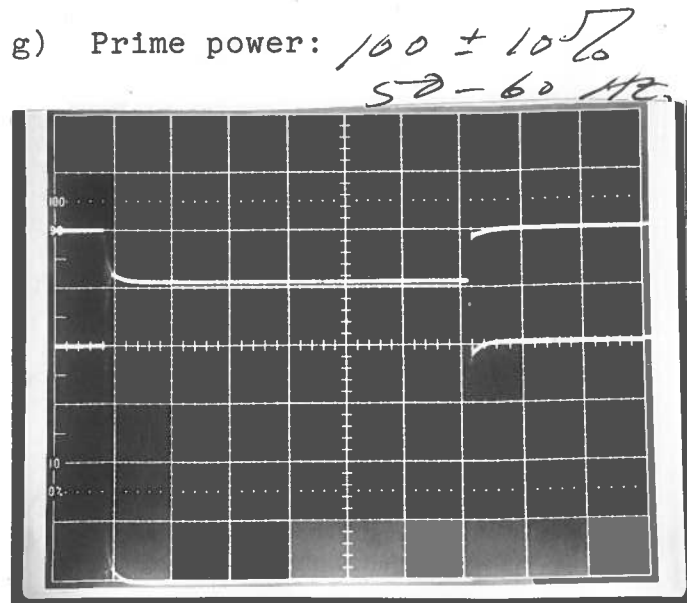
- a) Output signal amplitude: 0 TO  $\pm 40$  VOLTS TO  $R_L \geq 0.2 \Omega$
- b) Pulse width: *AVERAGE*: 0 TO  $\pm 100$   $\mu$ S  
20  $\mu$ S TO 20 MS
- c) Rise time: (+ DC)  $\leq 2 \mu$ S
- d) Fall time:  $\leq 2 \mu$ S
- e) PRF: 0 TO 1 KHz.
- f) Jitter, stability: OK

ⓐ PG-P,  $R_L = 0.2 \Omega$ , 50  $\mu$ S/DIV  
PRF = 100 KHz

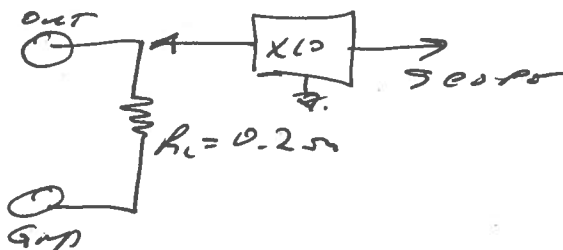


10V/DIV  
← 0V

ⓑ PG-P,  $R_L = 0.2 \Omega$  200  $\mu$ S/DIV  
PRF  $\approx$  1 KHz (1/4 OUT CYCLES)



1V/DIV  
← 0V



Ⓒ PG-N,  $R_L = 0.2 \Omega$  20  $\mu$ S/DIV  
PRF  $\approx$  100 KHz  
TOP: MAXIMUM  
BOT: MINIMUM