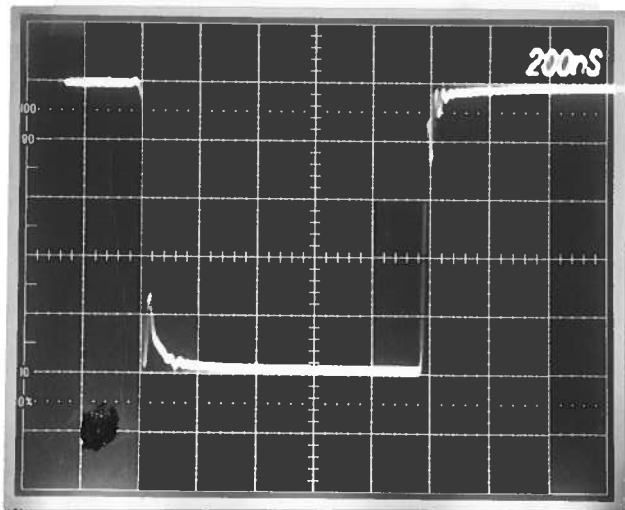


PULSE GENERATOR  
PERFORMANCE CHECK

Model: *AVO-6D-PS-API-N*

S.N.: *7319*

Date: *JUNE 1 1985*



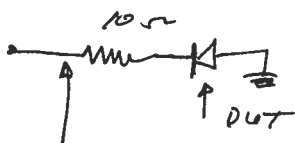
- a) Output signal amplitude:  
*0 TO - 10 Amps*
- b) Pulse width:  
*50 NS TO 5.0us*  
*(1% MAX DUTY CYCLE)*
- c) Rise time:  
*≤ 10 NS*
- d) Fall time:  
*≤ 10 NS*
- e) PRF: *0 TO 10 KHz*  
*(1% MAX DUTY CYCLE)*
- f) Jitter, stability:  
*OK*

g) Prime power:

*120/240 Volts*  
*50 - 60 Hz*

*[Signature]*

*20 VOLTS/DIV*  
*200 NS/DIV*  
*PRF = 3 KHz*



V. PROBE.