

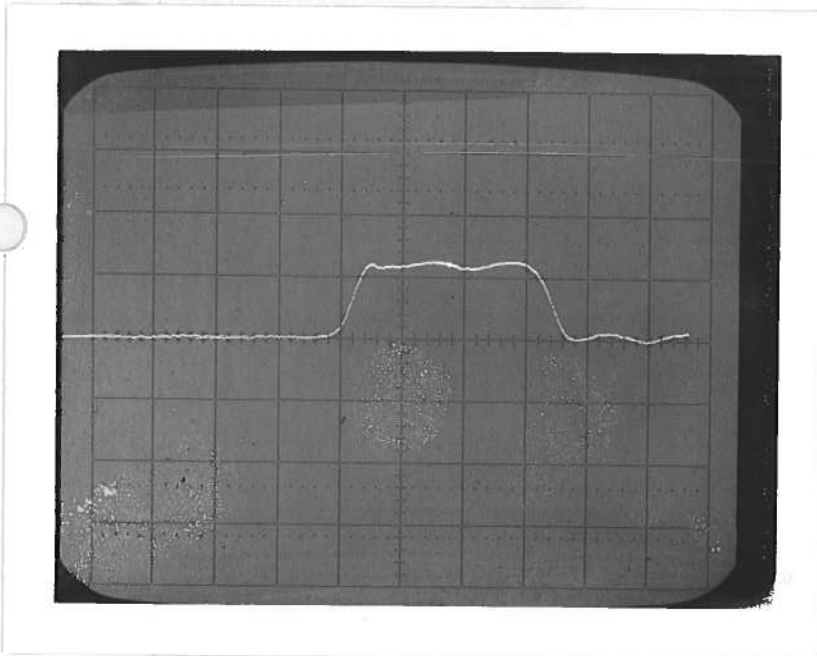
PULSE GENERATOR

PERFORMANCE CHECK

Model: AVL-MA-1

S.N.: 801

Date: MAY 17 82



2 NSEC/DIV
100 VOLTS/DIV
400 HZ

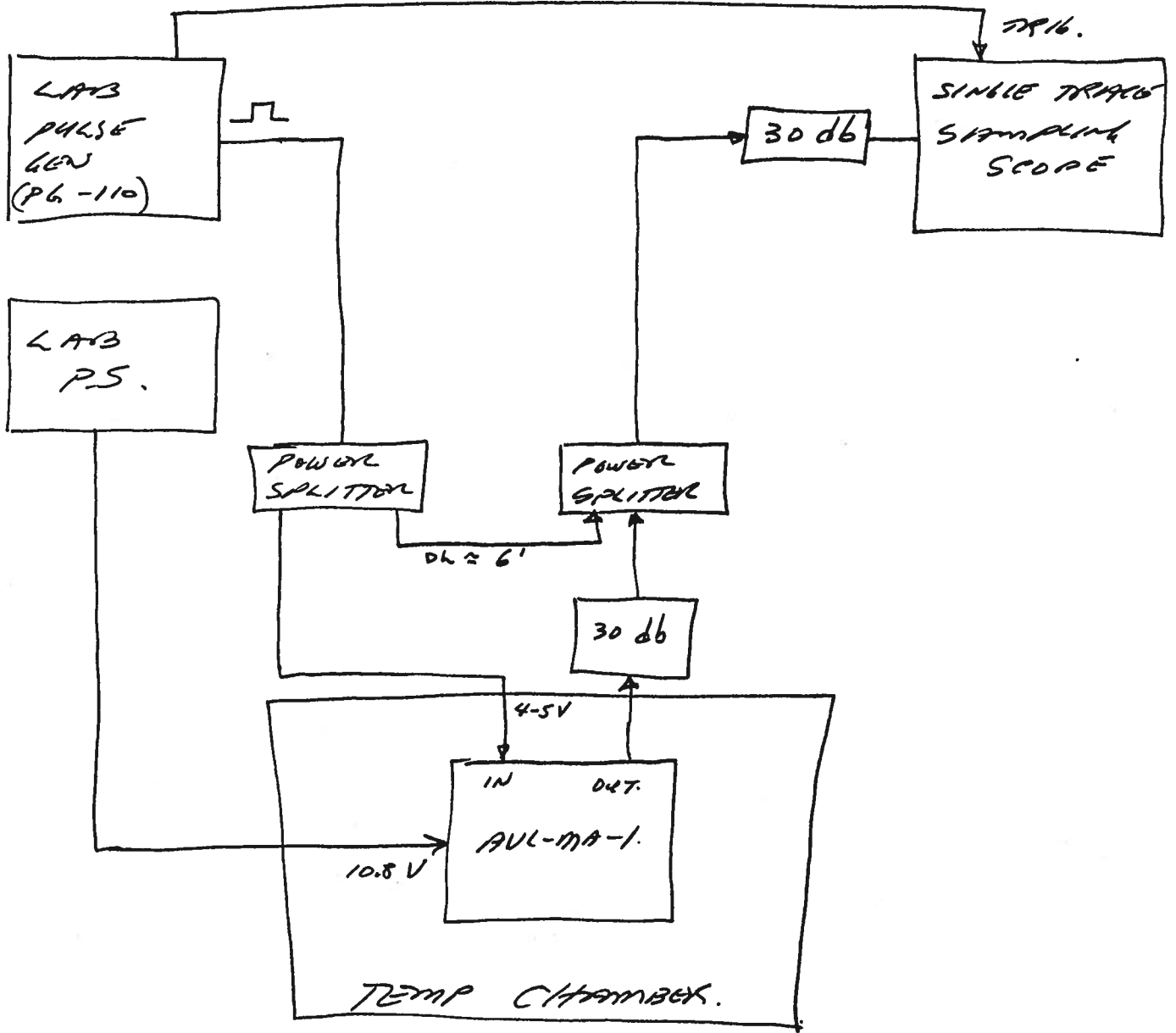
- a) Output signal amplitude:
 $\geq +100 V$
- b) Pulse width:
6 NSEC (3db)
- c) Rise time:
 $\leq 700 PSEC$
- d) Fall time:
 $\leq 700 PSEC$
- e) PRF:
0 TO 20 KHZ
- f) Jitter, stability:
GOOD. SEE FOLLOWING
TEMP DATA.
- g) Prime power:
+10.8 TO 13.5 V
78 mA AT 400 HZ.

b) INPUT TRIG AMP:
 $\geq +4.5 VOLTS.$

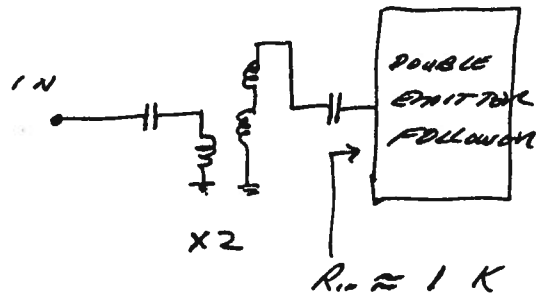
AUL-MA-1

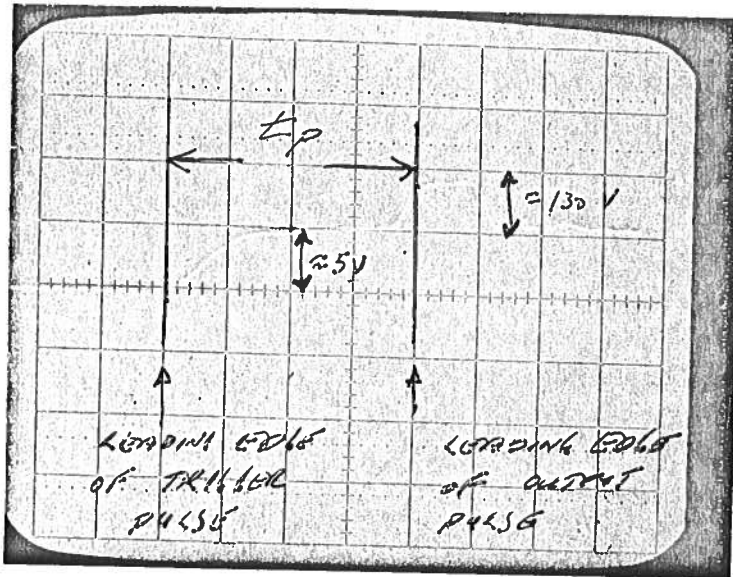
SN 801

(TEMP TEST
SET UP.)

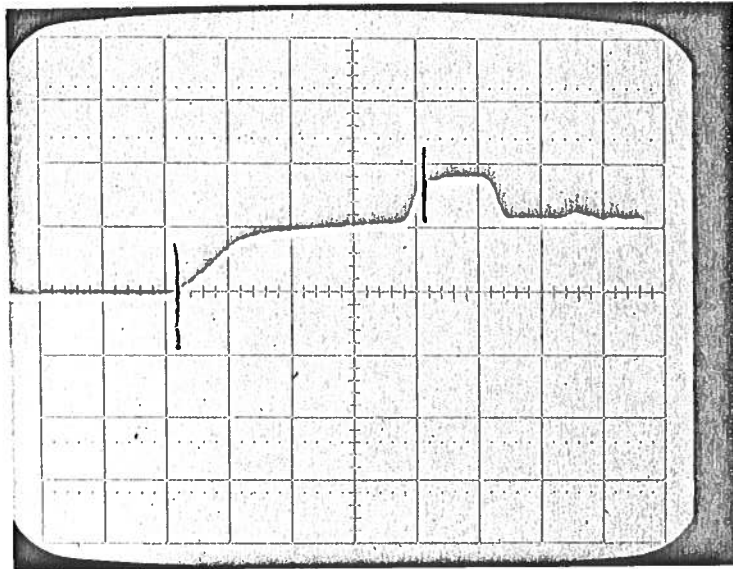


NOTE: FOR SN 801, AUL-MA-1 INPUT TRIG
CIRCUIT MODIFIED TO:

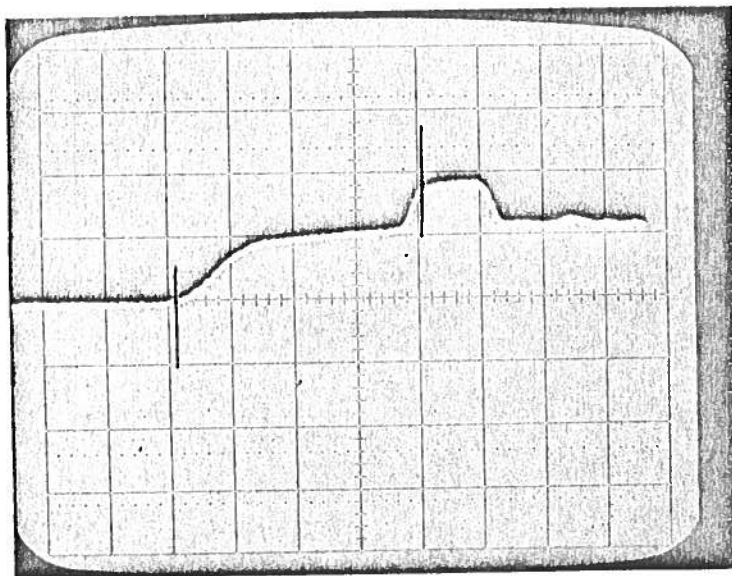




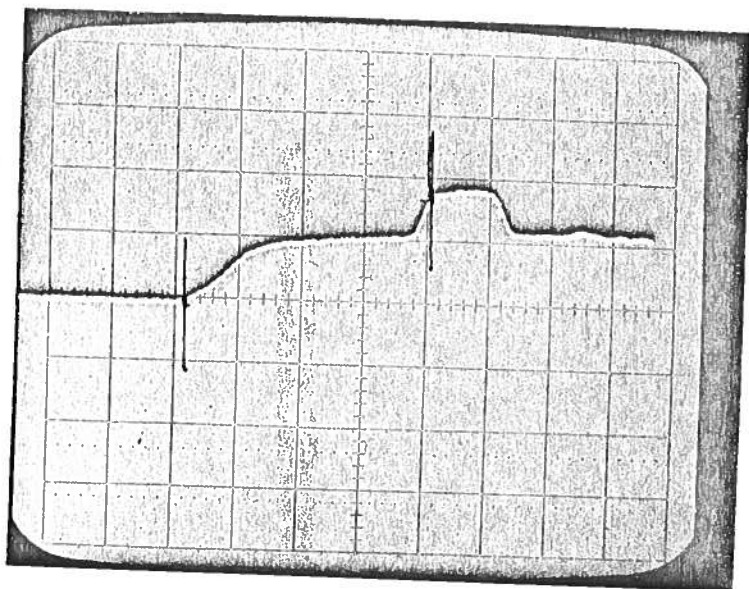
① RT
 10.8 V
 4.5 V DRIVE
 5 NSEC/DIV
 PRF = 400 HZ
 $I_S = 78 \text{ mA}$



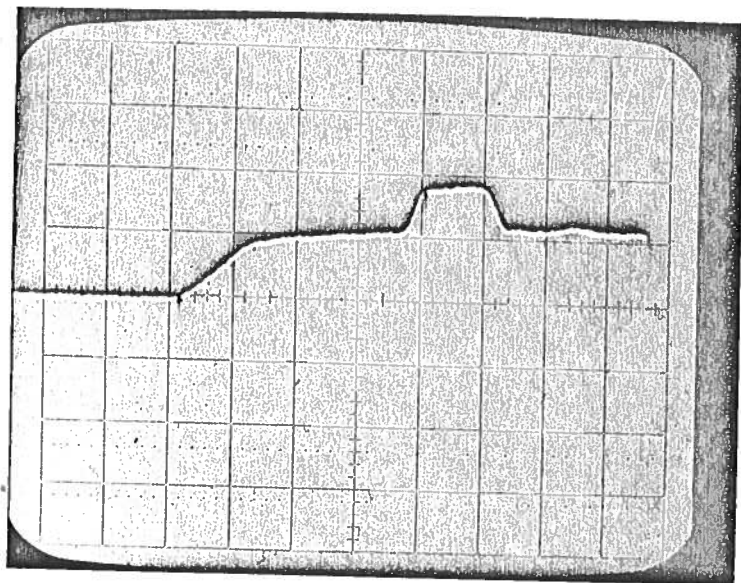
② -30°C
 (I_S UP BY)
 50%



③ RT AGAIN



④ +50°C



⑤ RT
AGAIN

CONCL: a) t_p DRIFT

≤ 0.5 nSEC

b) I_s RISES AT
REDUCED TEMP